

Portsmouth International Port Port Statistics 2011



A service of
Portsmouth
CITY COUNCIL 

www.portsmouth-port.co.uk

PORTSMOUTH INTERNATIONAL PORT

PORT STATISTICS 2011

Portsmouth International Port

About Portsmouth Harbour
Local Ferry Services and Cruise Facilities
Private and Commercial Wharves

Commodities

Imports 2011
Exports 2011
Summary of Imports and Exports by Commodity 2003 - 2011
Graph of Commodity Totals
Graph of Principal Trading Areas
Foreign Tonnage 2006 - 2011
Graph of Foreign Tonnage 2011
Coastwise Tonnage 2011
Graph of Monthly Tonnage 2011
Graph of Docks Tonnage by Quay 2011
Summary of Tonnage by Quay 2004 – 2011
Annual Trends - Tonnage 2000 – 2011
Annual Trends - Commercial Shipping 2002 - 2011
Comparison of Cargo Landed at Commercial Wharves 2010 –2011

International Cruise and Ferry Port

Portsmouth International Port
Cruise and Ferry Passenger Terminal Building
Roll on/Roll off and other Ferry Services
Graphs of Monthly Throughput: -
 Passengers 2011
 Vehicles 2011
 Freight 2011
Graphs of Annual Growth 1976-2011
 Passengers
 Vehicles
 Freight
 Shipping
Shipping Movements 2003 -2011

Portsmouth International Port

About Portsmouth Harbour

Portsmouth Harbour is known the world over as a Naval Port and home and maintenance base for the Royal Navy. The Royal Dockyard had its beginnings as long ago as the 13th Century.

Portsmouth International Port is in the ownership of Portsmouth City Council and is controlled by the Executive Member for Planning, Regeneration, and Economic Development.

In 1839 an Act of Parliament sanctioned the then Portsmouth Corporation to carry out construction for the betterment of the Port, which in those days meant the Quays at Camber Docks. It also authorised servants of the Corporation to collect Harbour Dues on ships using the Port and additional dues for all cargo passing over the quays.

Since those early days further Acts have been obtained to authorise the expansion of the Port, the building of new quays, modernisation of existing facilities and to construct a Continental Ferry Port for Portsmouth.

Portsmouth International Port, with its commercial quays and associated local businesses including the ferry companies continue to invest in new infrastructure, vessels and site development in response to the demand.

The number of Royal Navy ships now based in Portsmouth has decreased but the facilities within the Naval Dockyard are once again being used to build and repair boats, not only for the Royal Navy but also for Foreign Navies and commercial ventures too.

Tall Ships, Ocean Racers and Global Challenge vessels have all made Portsmouth the start or finish of their sea going adventures. Their crews have enjoyed leisure ashore, in the numerous local waterside bars, restaurants and shopping areas.

A variety of cruise vessels now make tourist calls in Portsmouth with their passengers taking advantage of the sights and sounds of Portsmouth City and southern Hampshire, as well as those which commence /conclude their cruise in Portsmouth.

The waters in and around Portsmouth Harbour are rarely quiet. Portsmouth Harbour provides a safe haven for a large number of yachts and other small craft within the growing number of marinas and safe mooring areas.

Local Ferry Services and Cruise Facilities

- a) **Wightlink, Isle of Wight Ferries** (www.wightlink.co.uk) provides Portsmouth's only car and passenger service to the Isle of Wight from a roll-on/roll-off berth at Gunwharf Terminal.



Four vehicle ferries service the **Portsmouth** to **Fishbourne** route, which carries the bulk of **Wightlink's** freight traffic as well as leisure traffic. The route is especially suited to the shipment of abnormal loads as the vessels have double width ramps and can accommodate extra long or heavy loads, subject to sufficient spread of weight. High vehicles can also be accommodated with prior notification. All terminals have tide-following linkspans connecting shore with ship for easy loading.

Wightlink's foot passenger catamaran service operates between **Portsmouth Harbour Station** and **Ryde Pier Head** and has direct rail connections on either side. Trains from London, Wales and the West Country, as well as local South Coast towns all deliver passengers direct to Portsmouth Harbour Station.



The service operates from the early hours of the morning until after midnight. For most of the day a frequent service is offered every half-hour, and the Island is just 22 minutes away on this catamaran route.

- b) Operating from the Hoverport on the seafront at **Southsea**, **Hovertravel Ltd** (www.hovertravel.co.uk) has run their regular passenger only hovercraft service to **Ryde** since 1965.



With an average crossing time of just 10 minutes and departures every 30 minutes for most of the day, rising to every 15 minutes during peak times during the summer season, **Hovertravel** provide a "Frequent and Fast" service.



Hovertravel also provides a connecting bus service to **The Hard Interchange**, **Portsmouth City Centre** and **Portsmouth & Southsea** railway station. The bus meets most hovercraft arrivals, and return journeys are timed to connect with departures to **Ryde**.

- c) With almost 100 crossings every day, nearly three and a half million passengers took the route from **Gosport to Portsmouth Harbour**, during 2011. From commuting to work, to taking a pleasure trip. **Gosport Ferry Co Ltd** proves it really is "**Shorter by Water**". This scheduled service takes approximately 4 minutes to cross the Harbour mouth.



A variety of summer cruises and party nights are also available visiting Beaulieu, Cowes and the River Hamble, see www.gosportferry.co.uk for details.

- d) There is a wide choice of excursions or tours by water available from various companies operating from both Portsmouth and Gosport sides of the Harbour.

There are waterbus tours of the Naval Dockyard, where the visitor can see

the home of the Royal Navy. Passengers can hop on hop off at stopping points in **Gosport** at the **Submarine Museum** to a summer Solent cruise.

The visitor can take a **Solent & Wightline Cruises** Harbour Cruise which lasts approximately 50 minutes, and enjoy the views of the RN ships in the Royal Dockyard, amongst other attractions. For easy access there are boarding pontoons at both **Gunwharf Quays** and the **Naval Dockyard**.



For a return to the age of steam, step on board the world's last sea going paddle steamer, **Waverley**, for one of her cruises along the South of England coastline.



The **Waverley** visits Portsmouth each September, offering full day, afternoon, or evening cruises in and around the Solent & South Coast. Details can be found at www.waverleyexcursions.co.uk

- e) Operating all year round **Hayling Ferry** run a ferry service for foot passengers, bicycles, wheelchairs and small motorcycles across the entrance to Langstone Harbour between **Eastney and Hayling Island** linking the citizens of Portsmouth with the beaches and the holiday resorts on Hayling Island. Details of their timetable can be found at www.haylingferry.co.uk
- f) **Camber Quay, Old Portsmouth** is home to Portsmouth's fishing fleet – some 20 to 30 vessels land fresh fish and shellfish in season on a daily basis. Johnson's Fish Market and Viviers UK Ltd (www.viviers-uk.com) all sell a wide variety of fresh and frozen fish and live or cooked shellfish from their fish markets on the quaysides.



In addition, **Camber Quay** has facilities for long or short term lay up of yachts and pleasure boats.

KB Boat Park operated by **Ken Brown Boats Ltd** (www.kb-boatpark.co.uk) offers a dry berth launch & recovery service for small craft; summer and winter boat storage for larger motorboats and sailing yachts, plus lift & scrub and ancillary maintenance services.



During the height of the summer some 15 to 20 pleasure craft a day secure to

the Quay walls. The sailors disembark for a visit to the fortifications, to visit one of Old Portsmouth's public houses or hotels, many with fine views over the Harbour entrance and the Solent, or to buy from a wide variety of fish from the markets situated on the quayside.

- g) Meanwhile at the North Eastern end of Portsmouth Harbour some 25,500 vessels, mostly luxury pleasure craft having travelled via the small boat channel pass through the lock (43m x 9.1m) to enter or leave **Port Solent Marina**.

Port Solent Marina (www.premiermarinas.com), operated by Premier Marinas Ltd, was officially opened by the Princess Royal on 29 July 1988.

The site covers an area of 84 acres. There are shops, restaurants, pubs, leisure facilities, as well as over 600 residential homes and flats, an 808 berth marina with chandlers, boat brokers, Portsmouth Harbour Yacht Club and other marine services.

- h) With over 500m of berth space and the capability of accommodating boats of 75 metres in length, **Gunwharf Quays** (www.gunwharf-quays.com), is available to tall ships, luxury yachts, corporate events as well as visiting boats.

Gunwharf Quays is also home to one of the most spectacular landmarks on Portsmouth's skyline, Spinnaker Tower and the South Coast's finest waterside developments with a plethora of shops and restaurants.

The **Tall Ships Youth Trust** vessel **Stavros S Niachros** is regularly based at Gunwharf Quay and further details of the calls and the cruises offered to



young persons can be found on their web site www.tallships.org. In addition other tall ships call at Gunwharf Quay both to visit the city of Portsmouth and to change crews.



With a number of **Mud Moorings** available to fishermen at The Hard, adjacent to the Royal Dockyard with its historic ships Henry VIII's Mary Rose, the Warrior and HMS Victory, Portsmouth can be said to cater for both sea-farers and nautical history lovers.

Cruise Ship Calls

There were 31 cruise ships calls in Portsmouth during 2011. Six of these visits were tourist calls with the remaining 25 being disembark / embarking calls.

With 38 calls currently booked for 2012 the future for Portsmouth International Port as a cruise call venue is becoming well established.



Private and Commercial Wharves 2011

- a) **MMD (Shipping Services) Ltd** operating from the commercial wharves at **Flathouse Quay** and **Albert Johnson Quay**, provide full agency and stevedoring services.

MMD (Shipping Services) Ltd was acquired by Portsmouth City Council in March 2008 and with the stability are now moving forward to a period of sustainable growth.

Over 675,000 tonnes of fruit, salads and vegetables was imported on board the 246 ships calling at the commercial wharves in Portsmouth during 2011.



As in past years, much of the UK's imports of Moroccan citrus fruits and Caribbean banana imports entered the country through Portsmouth International Port. Over 37,700 tonnes of Moroccan citrus fruits, and around 70% of the UK's total banana imports entered the country through here.

New Customers

2011 saw the introduction of Del Monte at the port with a weekly sailing from Costa Rica via Antwerp.

MMD Handled 67796 pallets in 2011 for Del Monte this total being a combination of Bananas, Pineapples and Melons, included in this total is 23820 pallets that were loaded in containers (1191) all these containers were

unstuffed at Portsmouth and back loaded empty on the vessels throughout the year.

Del Monte have 4 regular vessels on this charter the Star Leader, Pride, Care and Endeavour all these vessels being chartered from a UK based company Star Reefers.

Existing customers

- Fyffes A weekly service with Bananas and Pineapples from Belize and Costa Rica.
- Fyffes C weekly service with Bananas and Pineapples from Columbia
- Geest weekly service with Bananas from The Windward Islands and Dominican Republic.
- CMA CGM weekly service from Agadir and Casablanca with Moroccan citrus and produce, the season running from approx. November through to July.

What's new at MMD

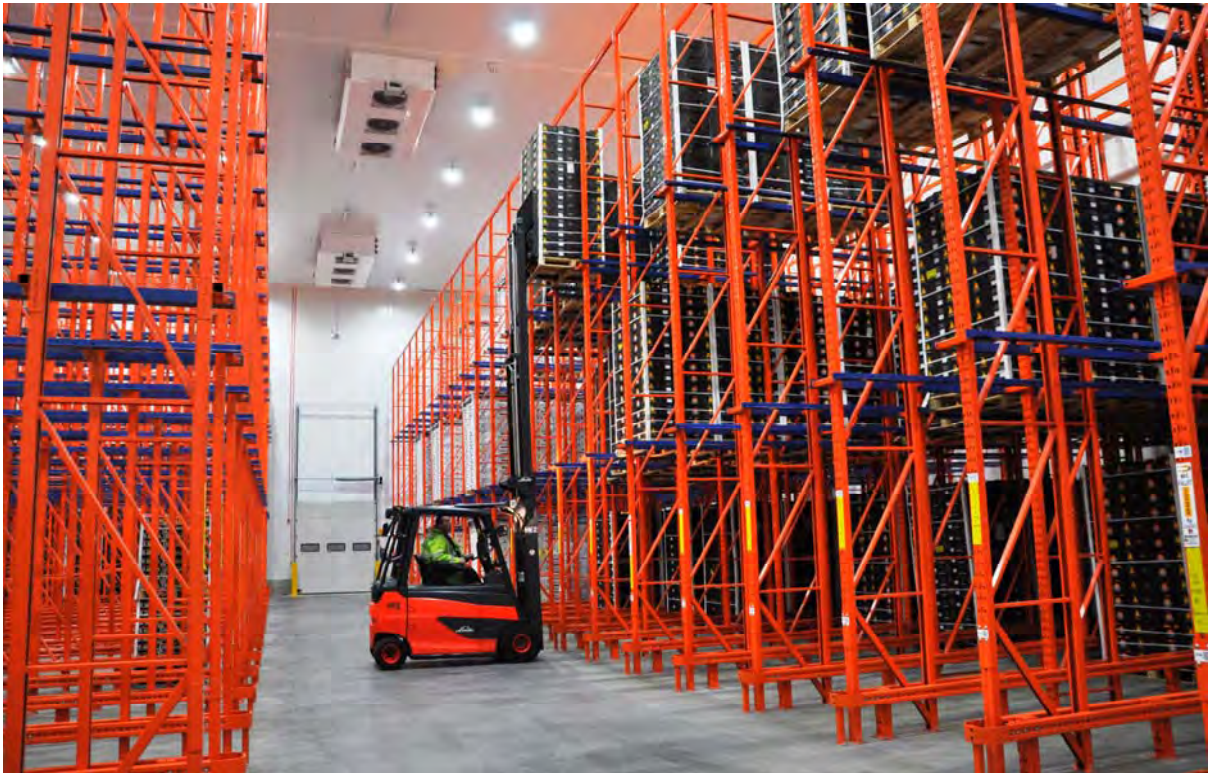
During 2011 we have replaced our ageing Fork lift fleet with 56 new Fork Lifts supplied by Linde Material Handling based in Camberley.

The New Fork lifts are far more efficient and have allowed us to reduce our fleets size by employing the latest battery swapping facilities- each electric f/lift is supplied with two batteries enabling us to greatly reduce our down time whilst waiting for the forklifts to re-charge.



We have also purchased 4 x 60 ton terminal trailers capable of carrying all container sizes to update our existing terminal fleet.

Building work on Store 13 commenced in January 2011 and was completed on December 23rd 2011 – the store was immediately put into use with Moroccan citrus on December the 27th !



Store 13 represents a large investment by PCC in MMD (£2.6m) and is capable of holding 3500 pallets in 4 different temperature controlled areas ranging from 0-14.5 deg.C.

- b) Meanwhile despite the recession resulting in fewer building projects, almost 260,000 tonnes of sea-dredged ballast was landed by **Kendall Bros. Ltd** at their **Eastern Road Wharf** and forwarded by road to various construction sites and private building projects within the UK, an increase on last year's cargo of nearly 20%.



- c) The established British ship owner and operator **John H Whitaker Tankers Ltd** has three modern double hulled bunker tankers servicing vessels at Portsmouth International Port on a daily basis.



The 6,100 tonne **Whitonia**, the 4200 tonne **Whitchallenger** and the 2,850 tonne **Jayne W** provide all grades of fuel on a 24 hour basis on behalf of ExxonMobil. In 2011 approximately 1,500 bunker operations were conducted. e-mail - AJ@JHW-SOTON.CO.UK

- d) **North Quay** offers additional facilities to the Port as a lay-by berth for the coastal tankers and bunker barges. **CPL Ltd** (www.cplpetroleum.co.uk) operates the small oil terminal at the eastern end of North Quay, **CPL Ltd** also supplies Marine Fuel and Oil for all marine vessels from two points within the Harbour boundaries – Camber Docks and Fountain Lake.

IMPORTS 2011

COMMODITY	ANNUAL TONNAGE	NO. OF SHIPS	PORT OF ORIGIN	AREA CODE	LOADING BERTH	AGENT/STEVEDORE
Ballast	258,919	not declared	Sea	OP	Kendalls	Kendall Bros. Ltd
	258,919	-				
Building Materials	248	7	Solent Area	CW	Camber	Ken Brown Boats Ltd
	248	7				
Fruit	69,531	52	Turbo	CA	AJQ	MMD (Shipping Services) Ltd
	230,915	54	Costa Rica	CA	AJQ	MMD (Shipping Services) Ltd
	8,497	8	Agadir	NA	AJQ	MMD (Shipping Services) Ltd
	29,213	26	Agadir	NA	Flathouse	MMD (Shipping Services) Ltd
	100,369	52	Columbia	SAM	AJQ	MMD (Shipping Services) Ltd
	222,739	51	Windward Isles	WI	AJQ	MMD (Shipping Services) Ltd
	17,149	3	Windward Isles	WI	Flathouse	MMD (Shipping Services) Ltd
	678,413	246				
General	137	1	Rotterdam	NE	Flathouse	MMD (Shipping Services) Ltd
	14	1	Solent Area	CW	Camber	Ken Brown Boats Ltd
	151	2				
Steel	136	10	Solent Area	CW	Camber	Ken Brown Boats Ltd
	136	10				
Timber	58	8	Solent Area	CW	Camber	Ken Brown Boats Ltd
	58	8				
Vehicles	55	3	Solent Area	CW	Camber	Ken Brown Boats Ltd
	55	3				
TOTAL IMPORTS	937,980	276				

Export

Index

EXPORTS 2011

COMMODITY	ANNUAL TONNAGE	NO. OF SHIPS	DESTINATION	AREA CODE	LOADING BERTH	AGENT/STEVEDORE
Building Materials	85	3	Solent Area	CW	Camber	Ken Brown Boats Ltd
	85	3				
General	48	2	Turbo	CA	AJQ	MMD (Shipping Services) Ltd
	7,320		Costa Rica	CA	AJQ	MMD (Shipping Services) Ltd
	5,088		Costa Rica	CA	Flathouse	MMD (Shipping Services) Ltd
	2,976		Columbia	SAM	AJQ	MMD (Shipping Services) Ltd
	792		Columbia	SAM	Flathouse	MMD (Shipping Services) Ltd
	33		Solent Area	CW	Camber	Ken Brown Boats Ltd
	39,697		Windward Isles	WI	AJQ	MMD (Shipping Services) Ltd
	3,370		Windward Isles	WI	Flathouse	MMD (Shipping Services) Ltd
59,324	2					
Steel	1,108	8	Solent Area	CW	Camber	Ken Brown Boats Ltd
	1,108	8				
Timber	4	1	Solent Area	CW	Camber	Ken Brown Boats Ltd
	4	1				
Vehicles	80	3	Solent Area	CW	Camber	Ken Brown Boats Ltd
	80	3				
TOTAL EXPORTS	60,601	17	In addition to the above 16,133 empty containers were shipped out of Portsmouth during 2011			
IMPORTS	937,980	276				
OVERALL TOTAL	998,581	293				

AREA CODES:

CW = Coastwise
 NA = North Africa
 CA = Central America
 NE = Northern Europe

OP = One Port
 SAM = South America
 WI = West Indies

Summary

Index

SUMMARY OF IMPORTS BY COMMODITY

Excluding Unitised Traffic RO/RO Trade CFP - 2003 - 2011

COMMODITY	2003	2004	2005	2006	2007	2008	2009	2010	2011
Ballast	320,539	333,182	315,050	399,688	413,054	334,662	266,374	216,891	258,919
Building Materials									248
Coal									
Empties	2,419	2,633	2,472	2,104	1,324	1,450			
Fertiliser									
Fruit	452,680	529,883	697,942	752,855	468,287	536,082	669,400	611,132	678,413
Fuel Oil									
General	2,946	1,584	2,266	5,683	9,585	5,329	196	159	151
Grain									
Miscellaneous									
Oil									
Potatoes									
Steel		75	3	7			19	36	136
Timber								46	58
Tomatoes									
Vegetables									
Vehicles	141	148	153	104	436	378	3	60	55
Total Tonnages	778,725	867,505	1,017,886	1,160,441	892,686	877,901	935,992	828,324	937,980

SUMMARY OF EXPORTS BY COMMODITY

Excluding Unitised Traffic RO/RO Trade CFP - 2003 - 2011

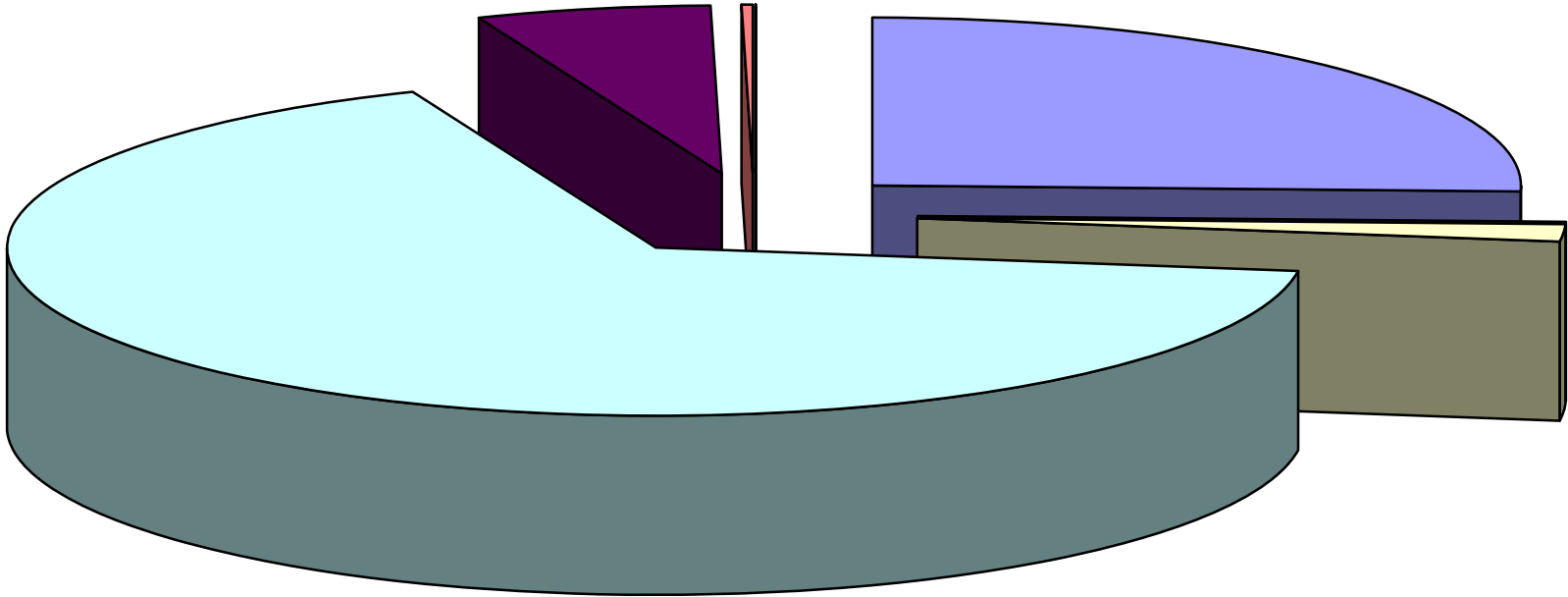
COMMODITY	2003	2004	2005	2006	2007	2008	2009	2010	2011
Ballast		272	18				93		
Building Materials	29,184	31,192	34,247	36,253	22,471	24,937	1,110	485	85
Coal									
Fertiliser	542	851	777	374	2,470	3,821			
Fuel Oil									
Fruit									
General	156,879	168,216	172,805	172,897	194,777	212,598	114,961	84,109	59,324
Grain									
Miscellaneous									
Oil									
Steel	2,934	4,054	4,108	4,227	2,334	2,773	243	173	1,108
Timber	11,014	10,404	12,117	9,648	8,824	10,046	17	19	4
Vehicles	27			31			22	60	80
Total Tonnages	200,580	214,989	224,072	223,430	230,876	254,175	116,446	84,846	60,601

Total Commodities	979,305	1,082,494	1,241,958	1,383,871	1,123,562	1,132,076	1,052,438	913,170	998,581
--------------------------	----------------	------------------	------------------	------------------	------------------	------------------	------------------	----------------	----------------

Foreign

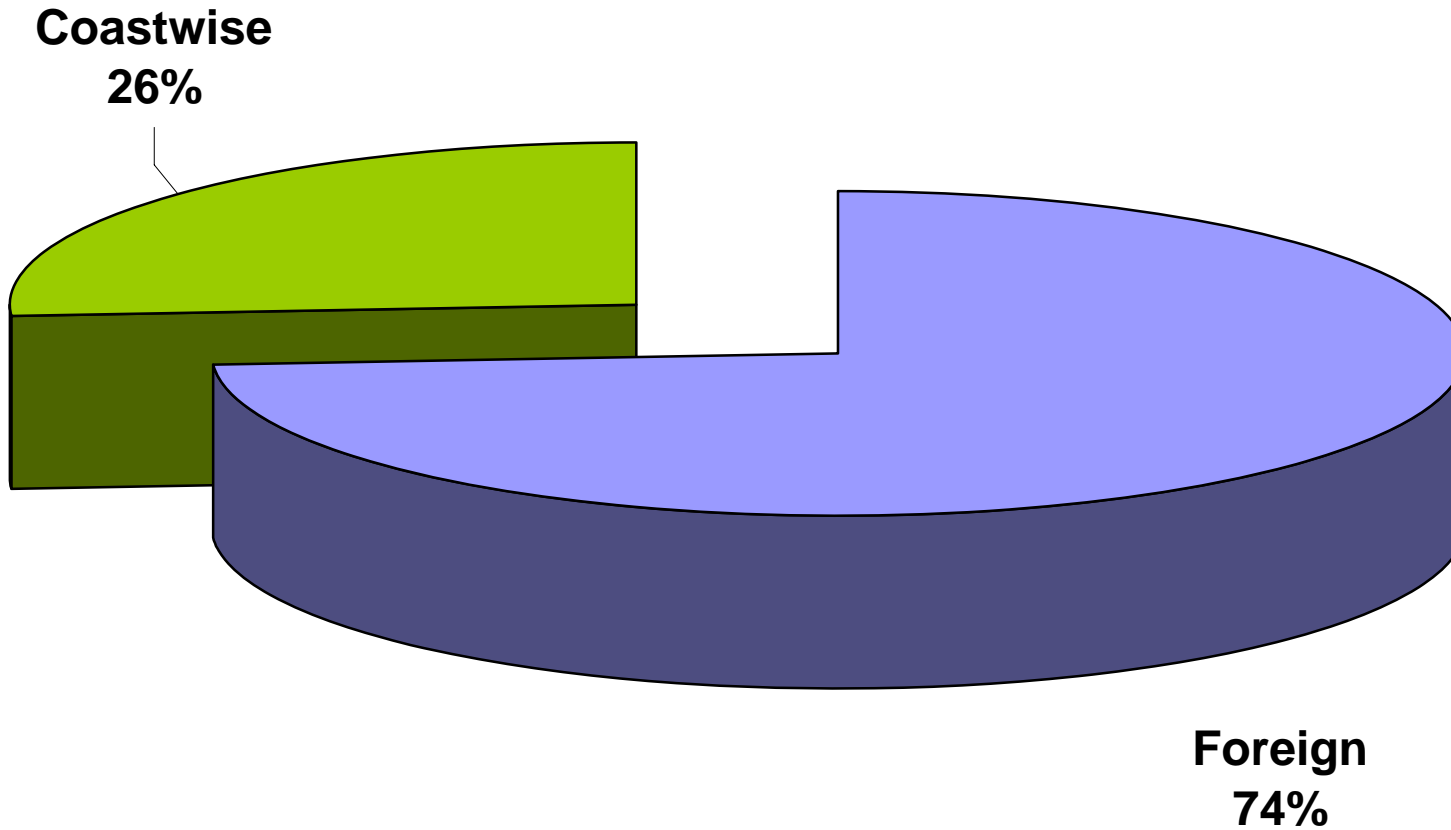
Index

Commodity Totals 2011



■ Ballast & Shingle	■ Building Materials	■ Empties - units	■ Fruit
■ General	■ Iron & Steel	■ Timber	■ Vehicles

Principal Trading Areas 2011



FOREIGN TONNAGES 2006 - 2011
Excluding Unitised Traffic RO/RO Trade CFP

2006

AREA	IMPORT	EXPORT	TOTAL	%
North Africa	45,902	4,721	50,623	8.5%
South Africa	129,137	2,175	131,312	21.9%
New Zealand	4,037	339	4,376	0.7%
North Europe			0	0.0%
West Indies	367,937	91,306	459,243	76.7%
Mediterranean			0	0.0%
Cent & Sth America	207,996	9,638	217,634	36.4%
Total	755,009	108,179	863,188	144%

2007

IMPORT	EXPORT	TOTAL	%
31,599	26,446	58,045	8.6%
12,013	370	12,383	1.8%
5,605	690	6,295	0.9%
	868	868	0.1%
316,334	87,482	403,816	60.1%
		0	0.0%
108,972	8,241	117,213	17.4%
474,523	124,097	598,620	89%

2008

AREA	IMPORT	EXPORT	TOTAL	%
North Africa	36,501	44,067	80,568	12.0%
West Africa			-	0.0%
New Zealand			-	0.0%
North Europe			-	0.0%
West Indies	223,852	65,954	289,806	43.1%
Mediterranean			-	0.0%
Cent & Sth America	277,319	24,293	301,612	44.9%
Total	537,672	134,314	671,986	100%

2009

IMPORT	EXPORT	TOTAL	%
33,641	19,246	52,887	6.7%
		-	0.0%
		-	0.0%
90		90	0.0%
261,478	70,543	332,021	42.3%
		-	0.0%
374,281	25,095	399,376	50.9%
669,490	114,884	784,374	100%

2010

AREA	IMPORT	EXPORT	TOTAL	%
North Africa	20,000	3,962	23,962	3.4%
West Africa			-	0.0%
New Zealand			-	0.0%
North Europe		140	140	0.0%
West Indies	264,471	60,532	325,003	46.7%
Mediterranean			-	0.0%
Cent & Sth America	326,661	19,429	346,090	49.8%
Total	611,132	84,063	695,195	100%

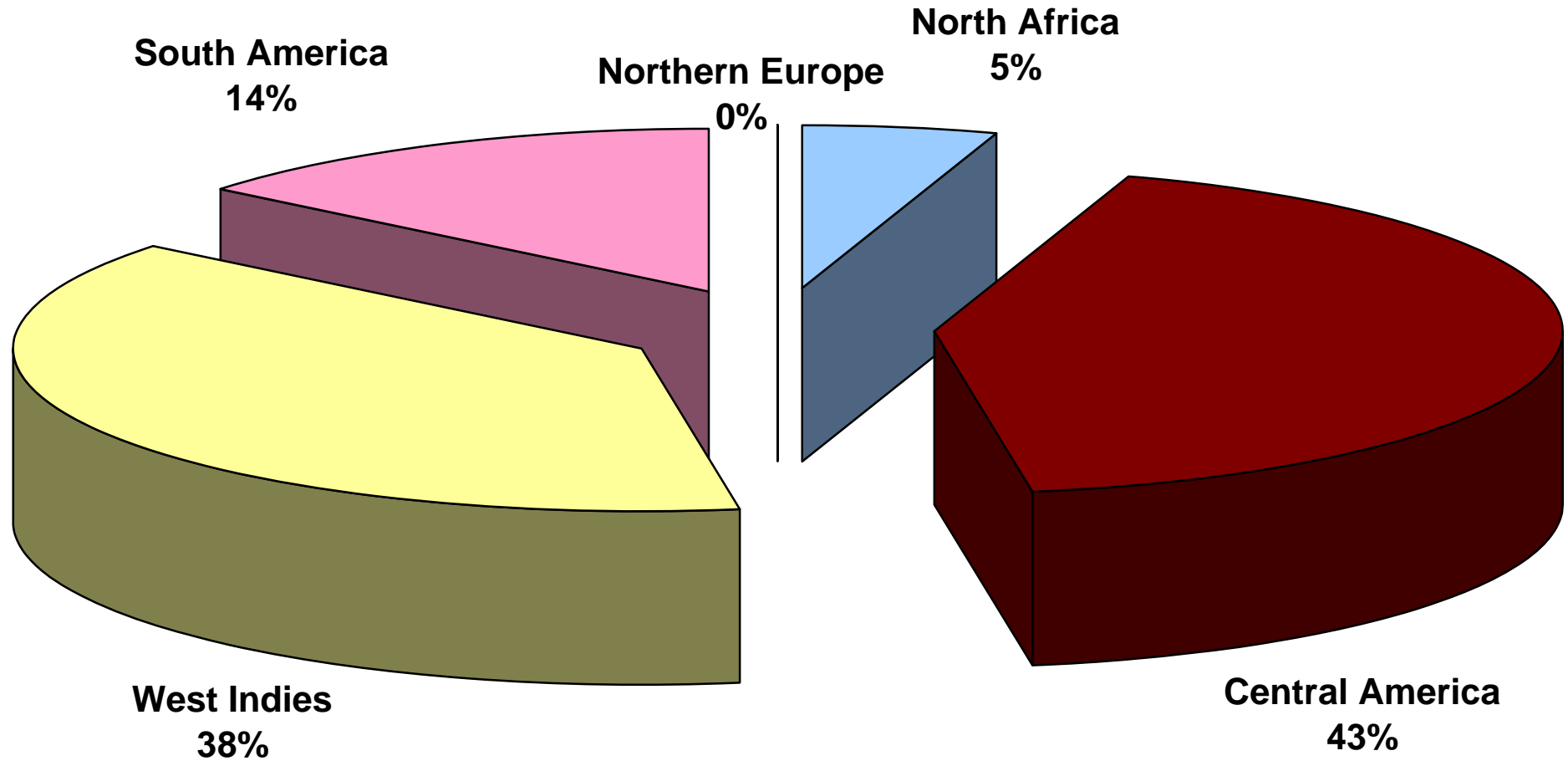
2011

IMPORT	EXPORT	TOTAL	%
37,710	0	37,710	5.1%
		-	0.0%
		-	0.0%
137		137	0.0%
244,148	43,067	287,215	38.9%
		-	0.0%
396,555	16,224	412,779	55.9%
678,550	59,291	737,841	100%

Coastwise

Index

Foreign Tonnage 2011



COASTWISE TONNAGES

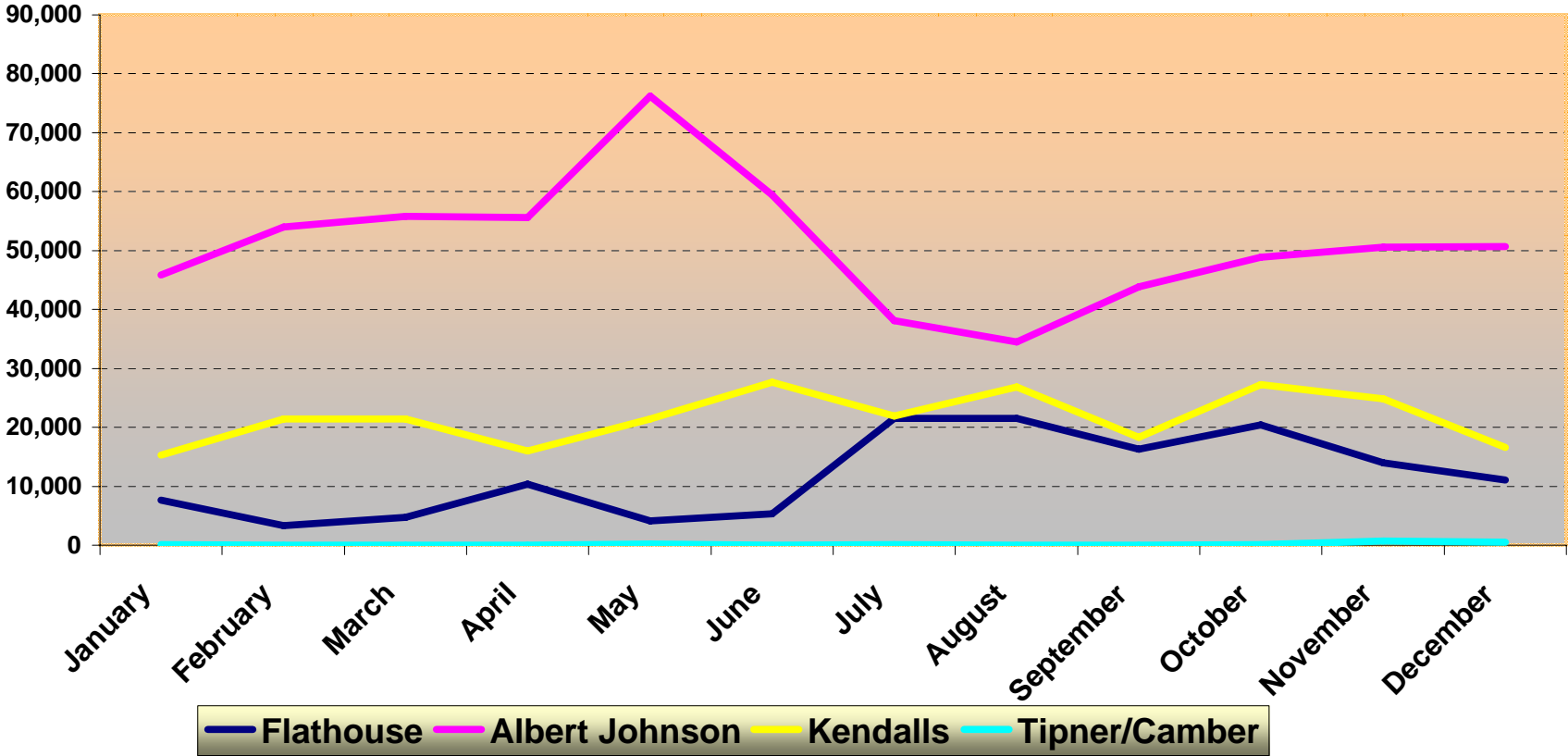
Excluding Unitised Traffic RO/RO Trade CFP

2011

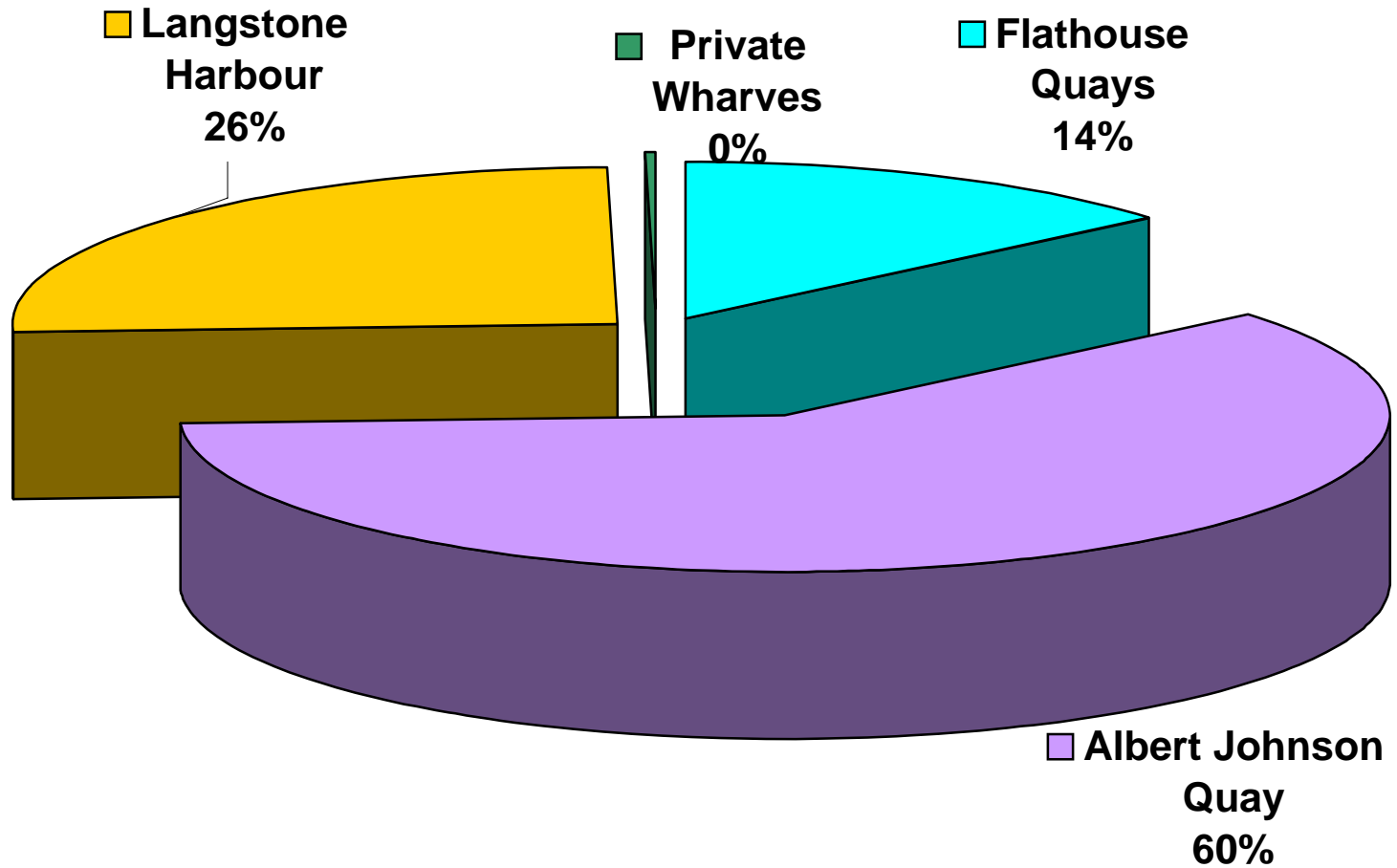
AREA	IMPORTS	EXPORTS	TOTALS	%
Sea	258,919		258,919	99.3%
UK	511	1,310	1,821	0.7%
Total Tonnages	259,430	1,310	260,740	100%

Index

Monthly Tonrages 2011



Docks Tonnages 2011



SUMMARY OF TOTAL TONNAGES BY QUAY 2004 - 2011

Excluding Unitised RO/RO Trade - CFP

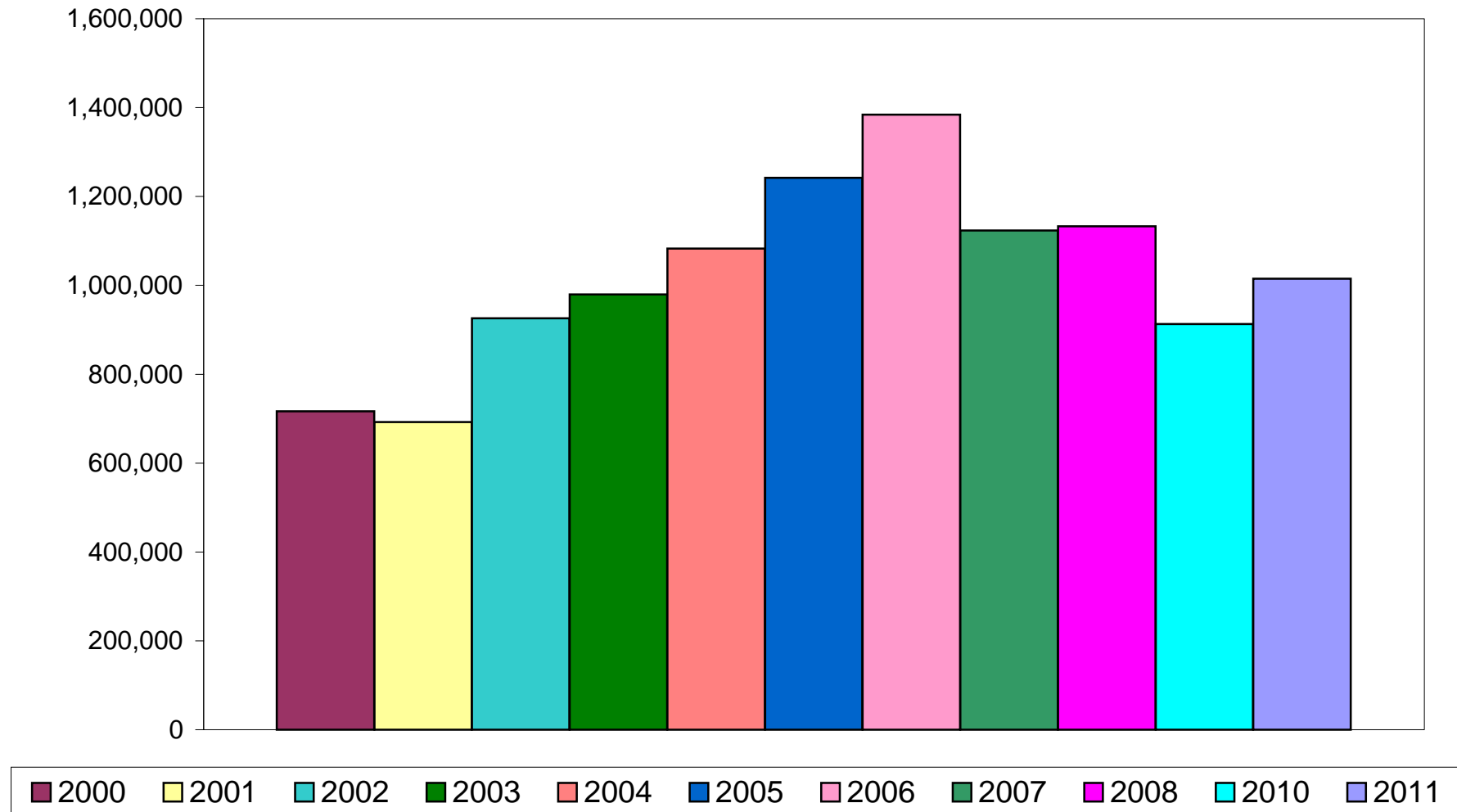
Dock	2004	%	2005	%	2006	%	2007	%	2008	%	2009	%	2010	%	2011	%
Flathouse	227,184	21.0%	290,403	23.4%	287,870	20.8%	265,421	23.6%	206,076	18.2%	279,349	26.5%	264,771	29.0%	137,732	13.8%
Albert Johnson Quay	521,300	48.2%	636,453	51.2%	696,203	50.3%	446,481	39.7%	591,281	52.2%	505,003	48.0%	430,424	47.1%	600,109	60.1%
Private Wharves inc																
Camber	29,516	2.7%	47,256	3.8%	57,004	4.1%	60,614	5.4%	57,645	5.1%	10,696	1.0%	1,084	0.1%	1,821	0.2%
Langstone	304,494	28.1%	267,846	21.6%	342,794	24.8%	352,440	31.3%	277,074	24.5%	257,365	24.5%	216,891	23.8%	258,919	25.9%
Total	1,082,494	100%	1,241,958	100%	1,383,871	100%	1,124,956	100%	1,132,076	100%	1,052,413	100%	913,170	100%	998,581	100%

Distribution	2004	%	2005	%	2006	%	2007	%	2008	%	2009	%	2010	%	2011	%
Foreign	626,779	50.5%	800,951	60.5%	863,188	76.8%	598,620	53.3%	598,620	53.3%	784,374	74.5%	695,195	76.1%	737,841	73.9%
Coastwise	334,045	26.9%	315,102	23.8%	339,798	30.2%	413,054	36.8%	413,054	36.8%	268,064	25.5%	217,975	23.9%	260,740	26.1%
Channel Islands	121,670	9.8%	125,905	9.5%	120,885	10.8%	111,888	10.0%	111,888	10.0%	0	0.0%	0	0.0%	0	0.0%
Total	1,082,494	87%	1,241,958	94%	1,323,871	118%	1,123,562	100%	1,123,562	100%	1,052,438	100%	913,170	100%	998,581	100%

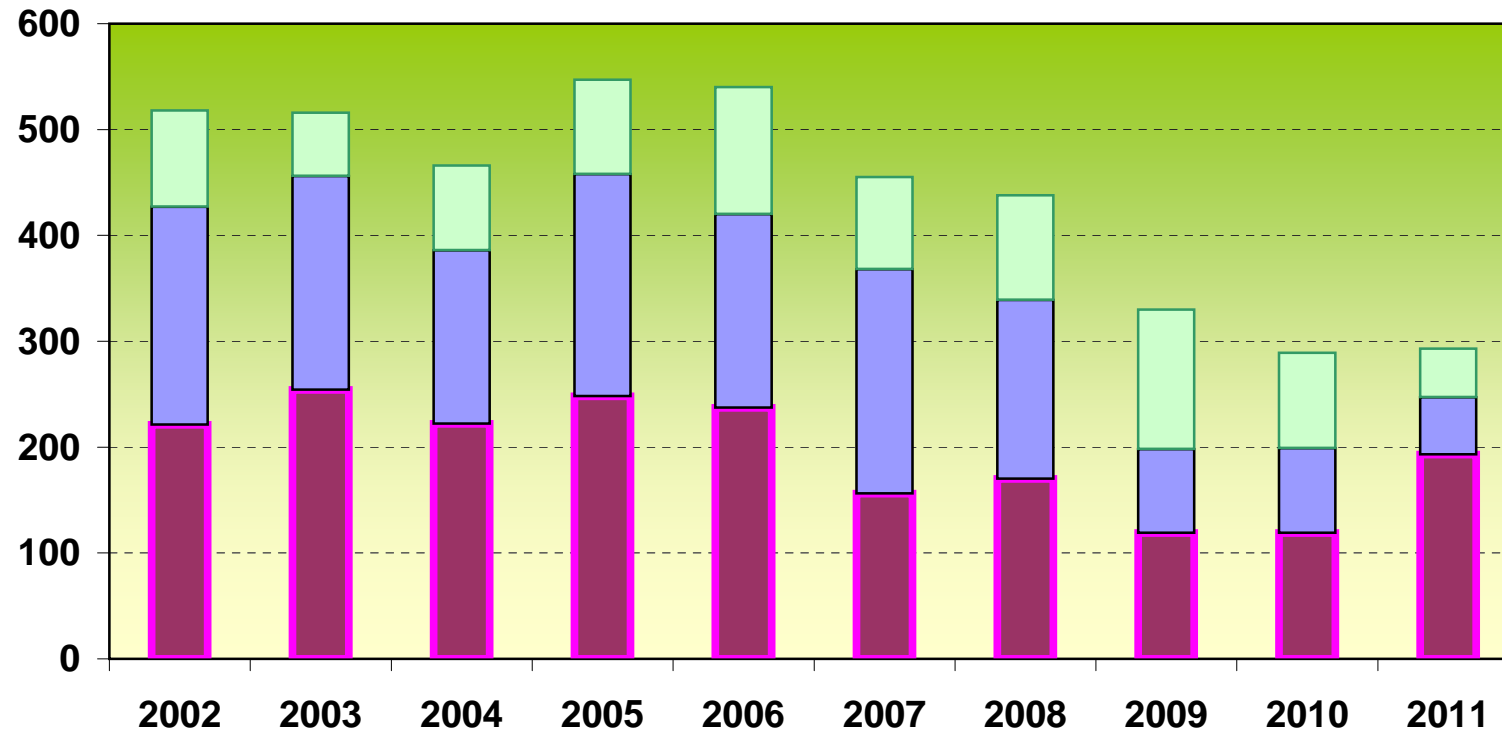
Roll on/Roll Off

Index

Tonnage Trends 2000-2011



Commercial Shipping Movements



■ Albert Johnson Quay

■ Flathouse Quays

■ Private Wharves

Portsmouth International Port

Portsmouth International Port, situated at the end of the M275, was opened in June 1976. Initially providing two cross channel companies with an operating area of approximately 4 acres of land reclaimed from Portsmouth Harbour and a single linkspan from which a summer only passenger service to Cherbourg and St Malo was planned. However, before the year was out an all year round freight service commenced in addition to the passenger services.

Towards the end of 1977, a second linkspan was installed, providing a third shipping company with the facility to operate a daily passenger/freight service to the Channel Islands (both Jersey and Guernsey).

Additional reclamation of land from the Harbour and the purchase of land to the land ward side of the Ferry Port enabled the City Council to keep abreast of the increase in demand and the site currently occupies some 17.6 hectares (44 acres). With the opening of a new exit in July 1998, egress from the Port for most car drivers is



directly onto the M275.

Visitor and long term parking with the capacity for 516 cars is provided in a multi-storey car park operated by **APCOA**.

Arranged over five floors, there is a dedicated space for motorcycles and an electronic car service to transport disabled passengers to and from the Terminal Building.

In May 2010, Navigate were appointed by Portsmouth Port to drive all of the marketing, branding and PR for the business with a three year contract.

In January 2011, Navigate launched a new name and new brand for the Port, changing it from Portsmouth Continental Ferry Port to Portsmouth International Port, to reflect the increasing importance that Portsmouth is playing in the international shipping stage.

Much of Navigate's focus has been on the development of key relationships with the Port's partners including ferry and cruise operators, local authorities, industry professionals and the destinations themselves in order to make the most of all opportunities of promoting and raising awareness of the Port.

For more information contact Navigate on 01730 235666 or email Portsmouth@navigate-design.com

Condor Ferries (www.condorferries.co.uk) operates a daily conventional ferry service (excluding Sundays) between Portsmouth and the Channel Islands of Jersey and Guernsey.



During the summer the conventional ferry, **Commodore Clipper**, operates from Portsmouth to Cherbourg every Sunday from May to September. With space for up to 300 passengers and 100 cars, **Commodore Clipper** features a café style restaurant, Club Class lounge with reclining seats or the comfort and privacy of an en-suite cabin.

Each year Condor Ferries carries more than 1 million passengers and 200,000 passenger vehicles between the UK, Channel Islands and France.

Condor Ferries also operates **Commodore Goodwill**, as a freight only vessel. The Condor Ferries fleet carries 100,000 freight vehicles into the Channel Islands each year as well as exporting tonnes of local produce

Brittany Ferries (www.brittanyferries.com) accounted for over 70% of traffic in the Western Channel and is a leading supplier of ferry-inclusive motoring holidays to France and Spain.

Up to three daily return sailings are operated between Portsmouth and Caen by the **Mont St Michel** (with capacity for 2,200 passengers and 800 cars) and **Normandie** (2,120 passengers, 600 cars). The crossing time is 6 hours.

The Portsmouth – St Malo route is served by the ever-popular **Bretagne** (2,056 passengers, 580 cars) with a daily overnight sailing from Portsmouth and a daytime return sailing from St Malo. The crossing takes 8¾ hours.

From April until November, the high speed ferry, **Normandie Express** (850 passengers, 235 cars) offers a daily return sailing between Portsmouth and Cherbourg, with a crossing time of just three hours, as well as an additional departure from Portsmouth to Caen on Fridays, Saturdays and Sundays.



A new service from Portsmouth to Bilbao commences on 27 March 2011 operated by Brittany Ferries latest cruise ferry, the **Cap Finisterre** (990 passengers 500 cars)

This twice weekly service is complimented by the existing service to Santander operated by Brittany Ferries' luxurious flagship, the **Pont Aven**, (2,400 passengers, 650 cars) with a crossing time of just 24 hours as well as once a week by the **Cap Finisterre**.

LD Lines (www.ldlines.co.uk) is a subsidiary of the French owner **LDA (Louis Dreyfus Armateurs)**. They operate a daily service on the Le Havre to Portsmouth route, with additional summer sailings by a new fast-craft service.



Cruise and Ferry Passenger Terminal Building

On 1 April 2011 Portsmouth International Port's new Terminal Building opened its doors to the first travellers to use the facilities.

Officially opened on 13 May 2011 by the Hon. Vince Cable MP, Secretary of State for Business, Portsmouth International Port's new terminal is part of a £16.5m investment and uses the latest eco-friendly technology to have minimum effect on the environment,



The building covers approximately 2,700 square metres and has a modern glass and stone façade. A brise soleil provides shade to the southern face of the building.



Inside there is a full height concourse containing check-in desks and the arrival/departure area.

A wide range of goods and snacks are available in the Amigo shop and from the Costa Coffee kiosk.



On a mezzanine floor at the western end of the building is the bar/café, with views over the concourse and an observation balcony overlooking the Port. A wide menu choice of hot and cold food is available all day, as well as the full bar service and a range of Costa Coffees.

The building includes a number of innovative environmentally friendly features. There are wind-catchers on the roof which provide ventilation to minimise the need for air conditioning in the summer, and a heat pump which uses the warmth of the sea to provide heating in the winter.

Sea water is also being used to flush the toilets, drastically reducing the water consumption of the building.



In addition to the building, new drop-off areas and roads are being constructed to improve access to and from the terminal building.

Within Portsmouth International Port's buildings a range of services are available to the traveller from 6am until midnight.

Travelex UK Ltd (www.travelex.co.uk) operates the foreign exchange bureau located in the main passenger terminal. Their friendly sales team can provide you with Euro currency together with Euro, US\$ or sterling travellers cheques, and prepaid Mastercard cash passports.

Although best known for its bureaux de change in many tourist locations, **Travelex UK Ltd** can also offer a wide range of travel and financial products, mobile phone top up vouchers, travel insurance and International Phone cards to name but a few of those available at Portsmouth.

A bank Automated Telling Machine for convenient cash withdrawal in either sterling or Euros is located adjacent to the Bureau.

Adrenalin Advertising Ltd (email: info@[adrenalinadvertising.com](mailto:info@adrenalinadvertising.com)) maintains and markets illuminated static display panels of varying sizes throughout the port. These advertising sites can be purchased for periods from 2 weeks upwards to display adverts to an audience of over 2.5m commercial and leisure travellers.

ROLL ON/ROLL OFF AND OTHER FERRY SERVICES

2003 - 2011

Isle of Wight Car Ferry

	2003	2004	2005	2006	2007	2008	2009	2010	2011
Vehicle Units	1,001,188	1,001,874	1,046,635	992,973	996,329	761,259	971,260	948,572	949,581
Passengers	2,796,666	2,812,393	2,760,669	2,628,510	2,551,030	2,028,295	2,495,971	2,446,901	2,724,175
Total	3,797,854	3,814,267	3,807,304	3,621,483	3,547,359	2,789,554	3,467,231	3,395,473	3,673,756

Isle of Wight Passenger Ferry

	2003	2004	2005	2006	2007	2008	2009	2010	2011
Passengers	1,471,246	1,461,733	1,459,763	1,433,319	1,345,541	1,141,117	1,357,782	1,378,370	1,257,523
Total	1,471,246	1,461,733	1,459,763	1,433,319	1,345,541	1,141,117	1,357,782	1,378,370	1,257,523

Isle of Wight Hovercraft Service

	2003	2004	2005	2006	2007	2008	2009	2010	2011
Passengers	765,032	763,691	756,579	779,528	795,776	803,795	849,150		
Total	765,032	763,691	756,579	779,528	795,776	803,795	849,150	0	0

Gosport Ferry Passenger Service

	2003	2004	2005	2006	2007	2008	2009	2010	2011
Passengers	3,717,202	3,860,593	3,747,533	3,597,817	3,643,429	3,666,119	3,534,248	3,392,471	3,363,179
Total	3,717,202	3,860,593	3,747,533	3,597,817	3,643,429	3,666,119	3,534,248	3,392,471	3,363,179

Continental and Channel Island Services

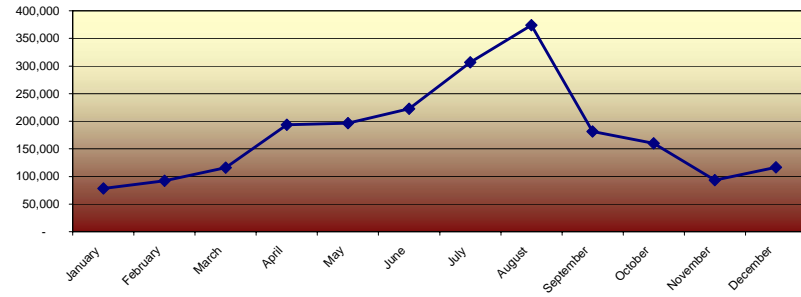
	2003	2004	2005	2006	2007	2008	2009	2010	2011
Vehicle Units	931,876	915,009	790,237	663,058	648,064	654,685	687,093	693,332	700,476
Freight Units	319,553	307,994	283,735	269,317	268,523	263,620	264,446	256,852	250,524
Passengers inc cruise	3,190,446	3,154,421	2,711,126	2,226,253	2,163,111	2,160,208	2,225,377	2,290,088	2,131,532
Total	4,441,875	4,377,424	3,785,098	3,158,628	3,079,698	3,078,513	3,176,916	3,240,272	3,082,532

Shipping by Quay

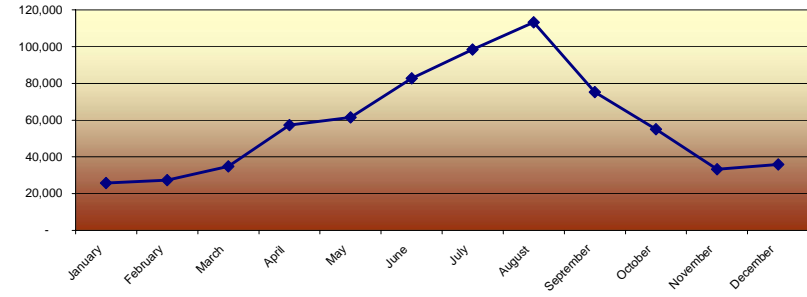
Index

Monthly Throughput Traffic at Continental Ferry Port, Portsmouth 2011

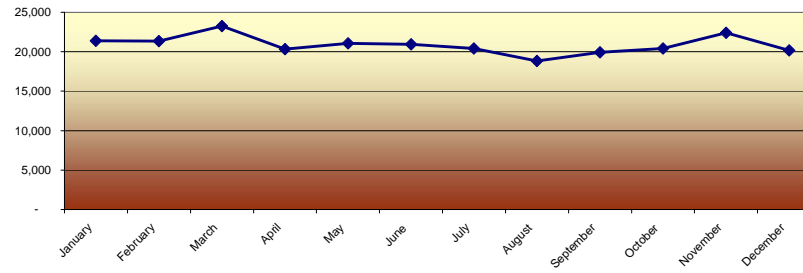
Passengers 2011



Passenger Vehicles 2011

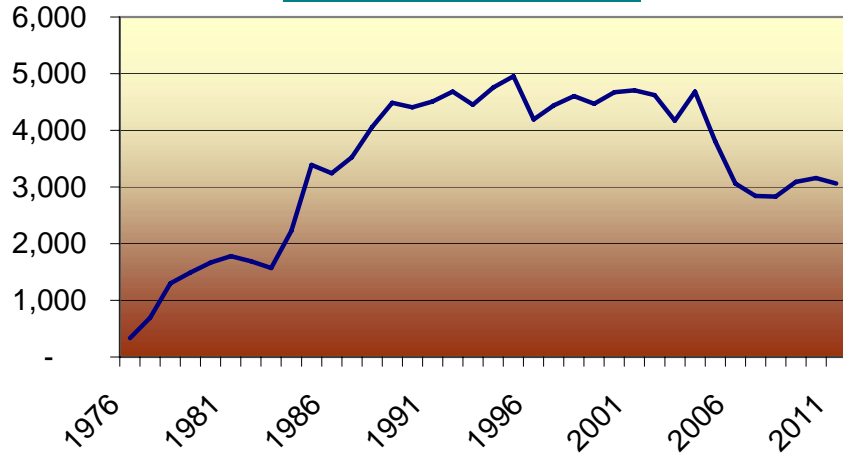


Freight Units 2011

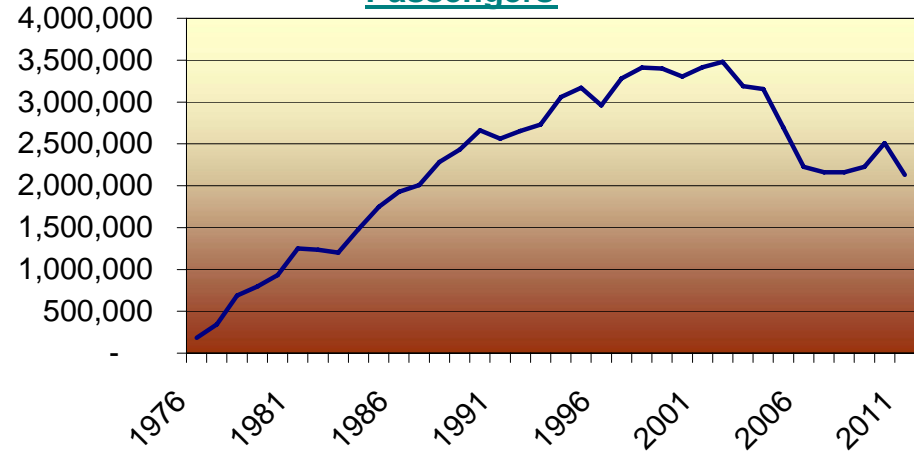


Growth 1976 to 2011

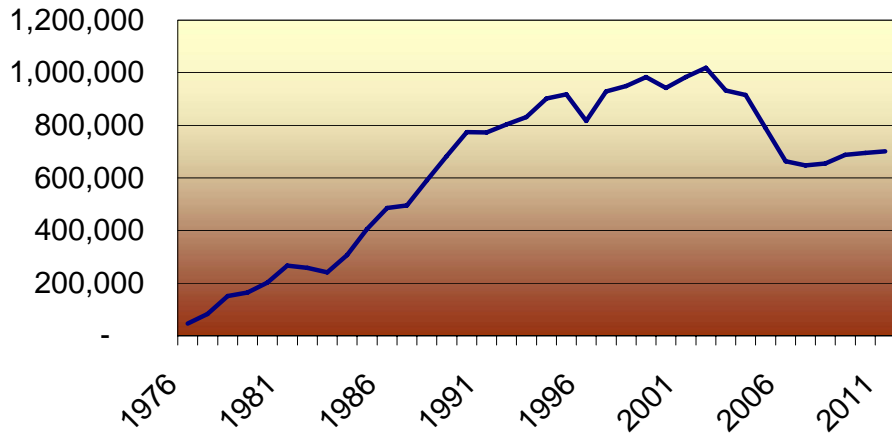
Shipping Movements



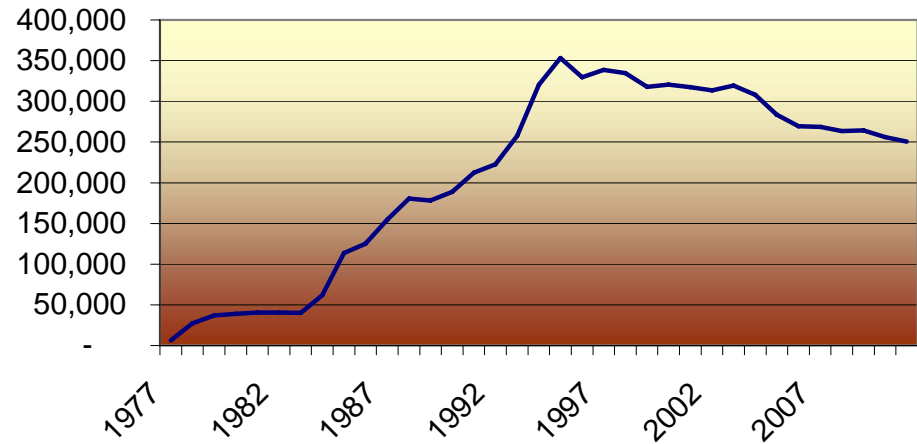
Passengers



Passenger Vehicles



Freight



SHIPPING ARRIVALS

2003 - 2011

Dock	2003	2004	2005	2006	2007	2008	2009	2010	2011
Flathouse	231	266	209	183	212	169	78	78	54
Albert Johnson Quay	316	463	248	237	156	170	118	119	193
Private Wharves	139	113	89	120	87	103	84	59	48
I O W Car Ferry	12,523	12,472	12,336	11,207	11,255	11,547	16,822	10,819	10,795
I O W Passenger Ferry	11,590	11,659	11,602	11,563	11,773	11,789	10,263	11,113	10,582
Hovertravel	9,793	9,734	9,640	10,387	9,750	9,750	9,750	9,750	9,750
Gosport Ferry	34,744	34,744	34,744	34,744	36,400	36,400	36,400	35,000	34,866
Water Taxi (seasonal)	80	86	82						
Portsmouth International Port (inc bunkers)	4,711	6,373	5,102	4,155	3,041	3,080	3,272	4,329	4,393
Total	74,127	75,910	74,052	72,596	72,674	73,008	76,787	71,267	70,681

Index